

Occasional Papers
OF THE
Boston Society of Natural History.

NEW ROBBER-FLIES (ASILIDAE, DIPTERA).¹

BY STANLEY W. BROMLEY.

THE numerous papers that have appeared recently on this family of flies might lead one to believe that the field was nearly exhausted in this country, so far as new species are concerned. It is a significant fact, however, to which attention was called by Melander in the December (1923) number of *Psyche*, in reference to the coincidence of his study of the genus *Cyrtopogon* with that of Curran's review of the genus, that nineteen new species in such a well-known genus should be described by two independent workers without synonymy. I believe that in both *Cyrtopogon* and *Dioctria* there will be found undescribed species in unworked collections, and more intensive collecting will bring to light many more.

Dioctria propinqua, new species.

♀.—Length 11 mm. Black. Face and anterior vertex, golden pruinose. Antennae, black with golden hairs; third segment slightly longer than 1 and 2 combined; style small. Proboscis black; palpi black with yellow hair. Beard white. Occiput very pale yellow pollinose. Thorax, abdomen, coxae, femora, tarsi and distal half of tibiae black. Proximal half of tibiae pale brown. Coxae with white pile; legs with scattered golden hairs. Thoracic dorsum golden pollinose with vestiture yellow. Hypopleurae and a patch anterior to the mesopleural suture silver pollinose becoming golden toward base of wings. Wings smoky; veins yellow basally, becoming brown distally. Abdomen with very short, scattered, appressed golden pile, becoming more numerous posteriorly, longer and lighter in color on venter and first three tergites.

Holotype from Dorchester, Massachusetts (June). In Melander's key to this genus (*Psyche*, vol. 30, p. 213, December, 1923), it would run to No. 9, *sackeni*, form *rivalis* Melander. It differs, however, in having the wings lighter-colored, in having the proximal half of the tibiae very pale brown rather than black, and in being appreciably greater in length. At any rate, the specimen is sufficiently distinct from *sackeni* to merit description. The holotype is in the collection of the Boston Society of Natural History.

Dioctria seminole, new species.

♀.—Length 8 mm. Black and yellow; a slender species. Vertex, palpi, antennae, black. Style very small, slightly less than one-sixth the length

¹ Contribution from the Entomological Laboratory of the Massachusetts Agricultural College, Amherst, Massachusetts.

of the third segment. Face and occiput silvery pruinose. Mystax silvery white. Hairs of palpi pale golden. Thorax shining black except humeral calli and lateral apices (parascutella) of mesothorax which are reddish yellow. Short silver pile on coxae and a pruinose strip of same color extending from base of wing to pro-coxa. Another branch of this strip just anterior to the mesopleural suture. Pruinose area of same color on post-scutellum and hypopleurae. Coxae, legs, pale yellow. Hind femur brownish above and at apex. Middle portion of hind tibiae brown. Hind basitarsus as long as next three joints together. Wings hyaline with iridescent reflections. Veins yellow basally, brown distally. Halteres yellow. Abdomen slender, fifth segment laterally dilated. First tergite, black; second, black with a median yellow area widening at lateral margins; third, yellow anteriorly, black posteriorly; fourth, black with lateral and posterior margins yellow; fifth, black with anterior, posterior and lateral (very narrowly) margins yellow; sixth and seventh, black with very slight amount of yellow on margins; eighth, yellow. Venter black.

A unique *Dioctria* in material loaned (through the kindness of Dr. J. Chester Bradley). The holotype was taken at Tallahassee, Florida, May 2, 1915 (C. S. Spooner) and is in the collection at Cornell University.

Cyrtopogon tenuis, new species.

♂, ♀.—Length 8 and 9 mm. respectively. Black. Antennae black with black hairs; style one-fifth length of antenna, with short spine at tip. Hairs of vertex and occiput black, of post-genae, white. Mystax thin; black below, yellowish-brown pollinose. Thoracic dorsum black with black hairs, brownish and white pruinose, pattern more obscure than in *Cyrtopogon lyratus*. Scutellum convex, black with black hairs. Coxae and legs black except tarsi and proximal one-third to three-fourths of tibiae which are dark chestnut. Wings hyaline, slightly smoky toward apex. Cross-veins faintly clouded with gray. Halteres yellow. Abdomen shining black with light hairs anteriorly, black hairs posteriorly. Lateral posterior angles of tergites 2-5, white pruinose. In male, a faint brown-pruinose patch on each posterior median of tergites 2-5, giving appearance of indistinct bands.

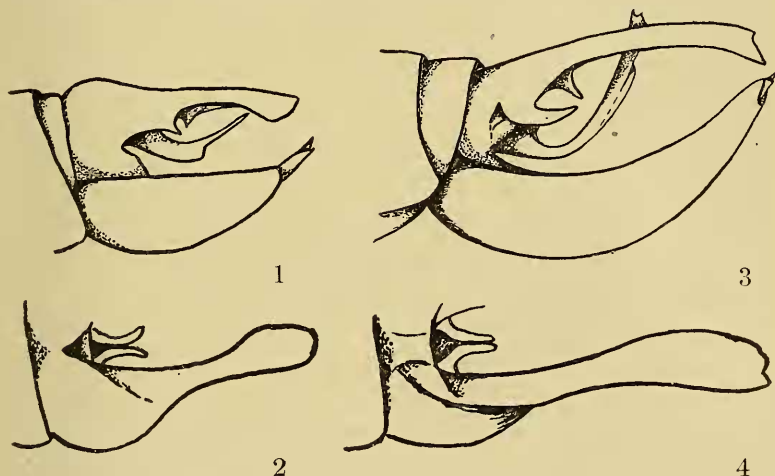
Two specimens, Southwest Harbor, Maine, July 20, 1923 (C. W. Johnson). The holotype (♂) and allotype (♀) are in the collection of the Boston Society of Natural History. In the keys it runs to *Cyrtopogon lyratus* O. S., but differs from that species in having the thoracic markings duller and more obscure, the anterior three-fourths of the tibiae chestnut, the sides of the first abdominal tergite with weak, scattered pile and no silver pruinosity, such as occurs in *lyratus*, the mystax with white hairs intermingled with the black, and the cloudings of the wings gray rather than brown. It is also appreciably smaller, more slender and with shorter pile.

Laphria altitudinum, new species.

♂, ♀.—Length 16-24 mm. Black with pile on thoracic dorsum pale yellow, and on abdomen, reddish yellow. Antennae black with black hairs. Proboscis and palpi black. Mystax, beard, and occipital hairs black. A few golden hairs on face and base of palpi. In some the beard is yellow, and in one specimen the yellow hairs extend into the mystax. A pair of golden bristles on ocellar tubercle (in twenty specimens of *Laphria sericea* examined, these bristles were black). Patch of long, pale-yellow pile on pleurotergite. Legs black with black hairs; a few light-colored hairs on pro-coxae. One individual has pale hairs on front femur and tibia, with a few hairs of same

color on the middle femur and tibia. Wings smoky, with brownish cloudings along veins. Venter of abdomen black. Hairs on first tergite, and on sides of second and sometimes third, mostly black. Hairs on eighth tergite black; rest reddish yellow.

Through the kindness of Mr. C. W. Johnson, seven specimens of this species were loaned for study. They fall close to *Laphria sericea* Say and are undoubtedly the same as the individual mentioned by McAtee (Ohio Journal of Science, vol. 19, p. 151, 1918), under *Laphria sericea*. Here he states, "A female specimen from White Mts., Vt.? [N. H.], Geo. Dimmock (M. C. Z.) which is referred to here differs in having the thoracic dorsum clothed with pale yellowish pile." The male, furthermore, differs quite markedly in the conformation of the genitalia. Both sexes differ from *sericea* in having the wings darker, with dark-brown cloudings along veins, and the hair on the first tergite of the abdomen and on the sides of the second and, in some specimens, the third, mostly black.



TEXT-FIG. 1. *Laphria sericea*, lateral aspect of male terminalia.

TEXT-FIG. 2. *Laphria sericea*, dorsal aspect of left forceps.

TEXT-FIG. 3. *Laphria altitudinum*, lateral aspect of male terminalia.

TEXT-FIG. 4. *Laphria altitudinum*, dorsal aspect of left forceps.

The holotype, Bar Harbor, Maine, June 16, 1922 (C. W. Johnson), allotype, Mt. Washington, New Hampshire, July 30 (F. W. Dodge); and two paratypes, Mt. Washington, New Hampshire, June 15 and July 4, are in the collection of the Boston Society of Natural History; one paratype, Tear Lake, Essex Co., New York, July 20, is in the collection of Dr. J. Bequaert, one in the U. S. National Museum, and one in the collection of C. W. Johnson.